

# DreamClick installation manual

BERRY  ALLOC

Version: 02/06/2022

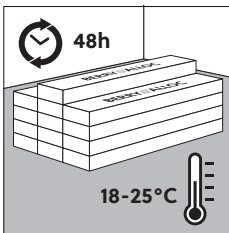
DreamClick® floors are suited for both residential and commercial areas.

To obtain a perfect result, we recommend carefully following the installation instructions.

Valid for these collections: Pure, Style, Live

Please refer to the corresponding technical datasheets to check the suitability for residential and commercial applications.

## 1. PREPARATION



### TRANSPORT AND STORAGE

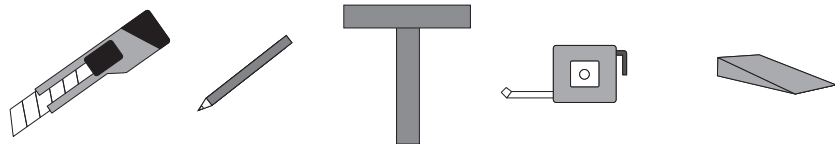
Transport your floor with care, using a flat surface. Keep the packaging flat and horizontal during storage and transport. The planks should be stacked in small neat piles, max. 5 boxes high. Avoid stacking the boxes on their short side, as this can cause damage to the locking system. It is important to store the planks for at least 24 hours at room temperature (18-25°C) before installation. Make sure the boxes are spread out so they can all equally adjust. This temperature should be maintained throughout the installation and for at least 24 hours after installation, except when installing on underfloor heating or cooling. In this case, please refer to the 'floor heating and cooling' manual.



DreamClick® floors must be stored inside.

### TOOLS

Trimming knife, pencil, T-square, tape measure and spacers (wedges).  
When installing skirting boards and profiles, please foresee a power drill.



### SUBFLOOR

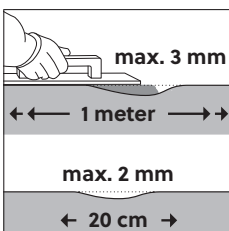
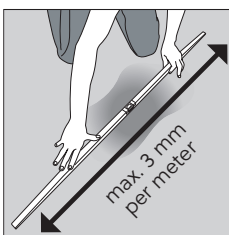
Careful subfloor preparation is essential for an excellent result. Rough or uneven patches in the subfloor can affect the new floor, resulting in an unsightly surface and causing excessive wear on higher spots, indentation on lower spots, and potential damage to the locking.

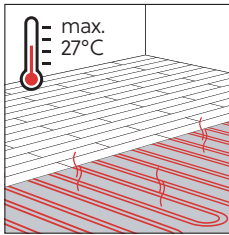
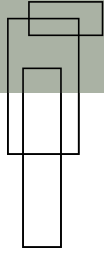
Remove all traces of plaster, paint, glue, oil, grease, etc. The subfloor must be clean, flat, dry, and stable. Remove any textile floor coverings (such as carpet, needle felts, etc.) Remove all debris (including nails) and vacuum.

DreamClick® floors can be installed on top of most hard-surface floor coverings, such as concrete, tiles, and wood, provided that the subfloor is smooth, dry, and clean. They are unsuitable for installation on soft-surface floor coverings, such as carpet, cushion vinyl, or cork, unless the subfloor acts as an underlay and meets the necessary requirements. Although DreamClick® floors are impervious to moisture, subfloors must be checked for moisture problems. If moisture is present, carry out sealing before installation. Excessive moisture can generate mould or fungus between the subfloor and your floor.

Depending on your subfloor, a moisture barrier/damp screen might be necessary. When properly connected with aluminium adhesive tape, our Dreamtec+ and Basetec underlays function as a moisture barrier. The aluminium side of the underlay should face upwards. Planks and tiles should be installed in the opposite direction of the underlay.

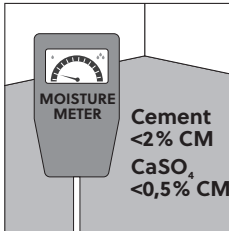
Make sure floor level deviation/height difference is a maximum of 3 mm per metre, and 2 mm per 20 cm. If these margins are exceeded, the subfloor must be evened out with a suitable filler or levelling compound, and a check must be carried out to determine if a sealer is needed. If you are not certain about the quality or suitability of your subfloor for the installation of DreamClick® planks or tiles, please contact your dealer, who will be more than happy to advise you.





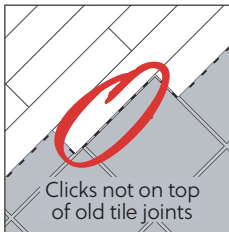
## Underfloor cooling and heating

Please refer to the detailed floor heating and cooling instructions in Appendix A of this document.



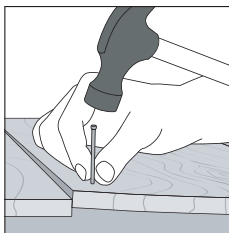
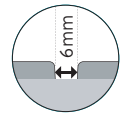
## Preparation of concrete/screed subfloor

Allow new concrete to dry sufficiently. The moisture content of the subfloor must be less than 75 RH at min. 20°C. Max 2% CM for cement and 0.5% for anhydrite. When using underfloor heating, moisture content should be less than 1.8 CM%, and 0.3 CM% for anhydrite. Always record and keep your moisture content results. Repair surface imperfections with an appropriate repair compound and check if a primer or sealer is needed. Vacuum the subfloor afterwards to remove all debris.



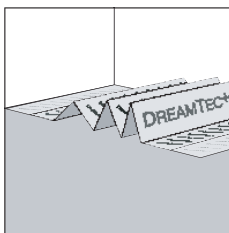
## Preparation of tile subfloor

Check the subfloor for moisture issues. The joints of the DreamClick® floor covering should never be aligned with the underlying tile joints. It is not necessary to fill the grouts of a subfloor comprised of ceramic tiles with joints when these do not exceed 6 mm in width. When installing DreamClick® on a tile subfloor, use one of the BerryAlloc LVT underlays to overcome surface imperfections.



## Preparation of wooden subfloor

Check the floor for insect infestations. Make sure the subfloor is level and nail down loose sections. Wooden subfloors should always have access to air and should be well-ventilated.

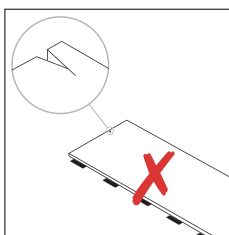


## UNDERLAY

We advise using the BerryAlloc vinyl planks underlays to reduce walking and sound transmission performance. Other underlays can be used if they have a thickness of maximum 1.5 mm and a compressive strength of more than 400kPa. We do not guarantee any acoustic or insulation properties with third-party underlays.

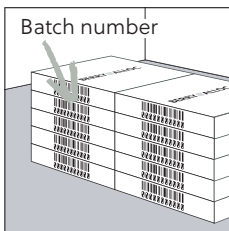
Spread out the underlay with the aluminium side upwards. When using the underlay as a damp screen, connect the layers with aluminium tape.

## 2. PRECAUTIONS



DreamClick® floors are not suitable for outdoor use, verandas, or winter gardens. Ensure that the indoor temperature is always kept above 5°C and ideally between 18 and 25°C. Avoid long-lasting exposure to direct sunlight (without a glass or window barrier). When the required expansion gaps are respected and the temperature is maintained within the temperature limits, DreamClick® floors can be installed in front of large windows. Every type of flooring is subject to discolouration after long-lasting exposure to sunlight. Protect your floor by using curtains and blinds.

Before and during installation, check all planks for visible defects using optimal light conditions. Damaged planks must not be used.



Make sure that you mix panels from different boxes, in order to minimise shade variations. This will create a more natural-looking floor.

DreamClick® floors cannot be used in areas where drainage systems have been incorporated into the floor.

For Pure tiles: use only a single production batch number for each installation.

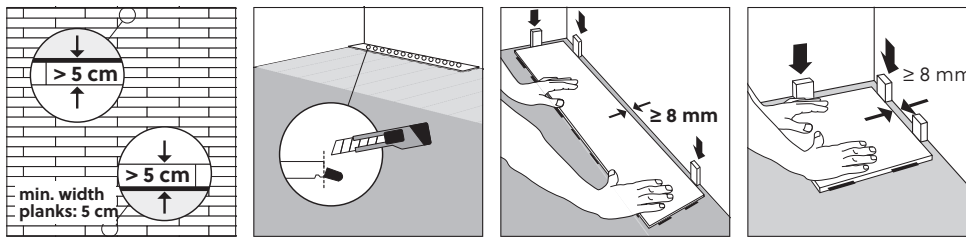
For tiles and planks: Always keep the production batch number (printed on the box), together with your order form/invoice.

## 3. INSTALLATION

Check that the floor planks have no visible defects before installing them.

DreamClick® floors should be installed so that they are 'floating'. This means leaving sufficient space between the floor and all walls or any fixed objects, so that the floor can move in any direction, i.e. it should not be screwed or nailed down to the subfloor.

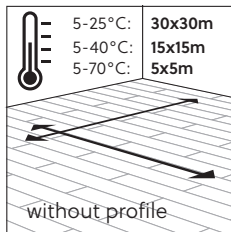
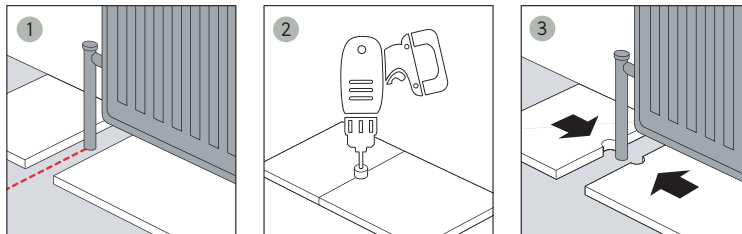
The installation of the floor must be the final operation in the project. Exceptionally heavy furniture, such as kitchen cabinets and islands, fireplaces, system walls, fixed closets, etc., cannot be installed on top of the flooring, as this restricts the floor's ability to expand.



Measure the room to create a balanced layout. This will help you determine whether the first row needs to be cut. The first and last rows should not be less than 5 cm wide.

If the first row of panels does not require trimming in width, you must remove the locks on the side facing the wall.

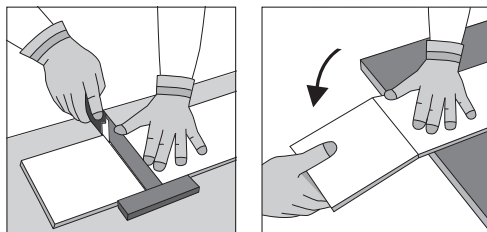
It is important to leave an expansion gap around the total perimeter of the floor and around columns, pipes, thresholds, etc. This expansion gap should measure at least 8 mm and increase with 1 mm once the installed floor exceeds 8 metre (e.g.: if the room measures 10 x 10 m, the expansion gap should be 10 mm around the perimeter). Please note that the expansion gap can measure 12 mm at most.



The largest recommended installation area depends on the room temperature.

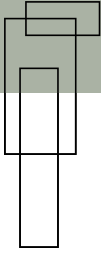
- 5-25°C (Heating, Ventilation & Air Conditioning): 30 x 30 m
- 5-40°C (normal): 15 x 15 m
- 5-70°C (extreme): 5 x 5 m

An expansion profile must be used if the area is larger than recommended for the room temperature. In general, it is not necessary to use an expansion profile in door openings when the expansion gaps are respected and the room temperature is the same, unless one of both rooms uses floor heating/cooling. The floor should remain a floating installation at all times.

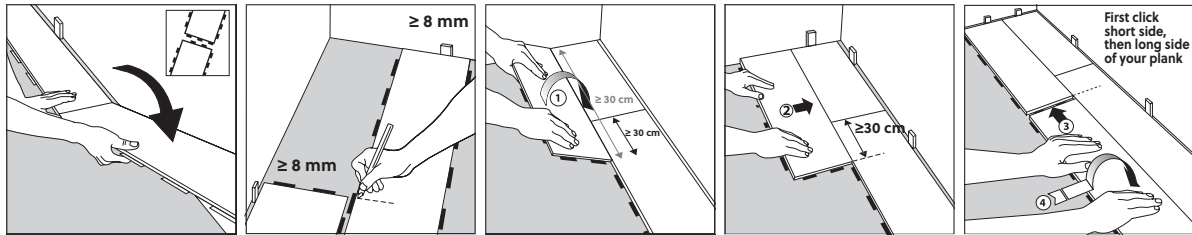


In commercial applications, we recommend using metal BerryAlloc profiles.

Do not use a hammer to connect the planks.  
Cut boards with a trimming knife, decor side up.



## PLANKS

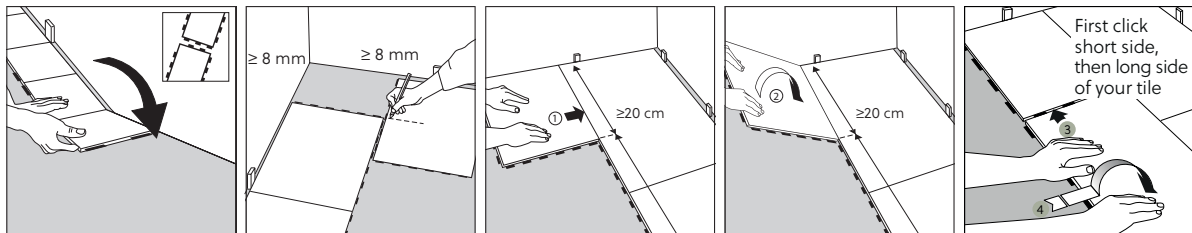


Always make sure that the short end joints are staggered by a minimum of 30 cm or three click elements when you start the next row. Use the leftover piece from the previous row as the first piece of the next row, provided that this piece is at least 30 cm long. In order to find a connection with the locking tabs of the previous row, it may be necessary to cut off an extra part of the leftover piece.



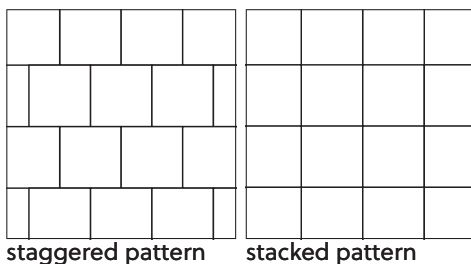
DreamClick® planks can be installed in a variety of different patterns.

## TILES

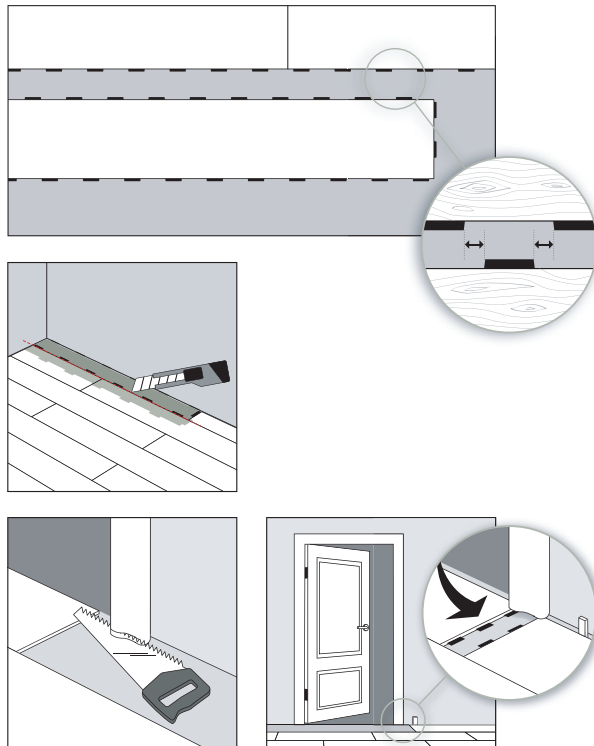
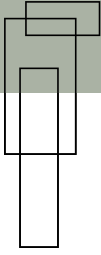


Always make sure that the short end joints are staggered by a minimum of 20 cm or two click elements when you start the next row. Use the leftover piece from the previous row as the first piece of the next row, provided that this piece is at least 20 cm long. In order to find a connection with the locking tabs of the previous row, it may be necessary to cut off an extra part of the leftover piece. If the dimensions of the room require smaller pieces than 20 cm to complete your floor, these pieces should be glued together via the locking system.

A staggered pattern (offset or drop) is stronger than a stacked (straight) pattern. For this reason, we advise against to using a stacked pattern in narrow spaces. Stacked patterns can be used as of a width of 1m80.



The floor pieces should never be glued to the subfloor, as this affects the expansion of the floating floor, even when installed in front of a large window.



The click elements of the new row need to be positioned exactly in the middle of two locks of the previous row. From the second row onwards, always connect the short side first and then the long side.

To install the last row, position a loose plank exactly on top of the last one laid. Place another plank upside down and next to the wall, and mark the plank underneath. Cut the marked plank to size and fit into place. This method should be repeated for each plank until the last row is complete.

For door mouldings, lay a plank facedown next to the door moulding. Saw the moulding, then slide the plank under the moulding. Make sure the moulding doesn't rest on the floor.

## 4. FINISHING



Use BerryAlloc accessories for a perfect result.

To allow the necessary contraction and expansion for a floating floor, we advise against fixing any accessories on the floor. Never attach skirting boards directly onto the installed floor. Permanent sealing products (silicone) should never be used to seal up the gap between the floor covering and skirting boards/profiles. Joints on fixed building elements (door frames, heating pipes, etc.) should never be sealed with elastic filler. Use end profiles to cover expansion joints. Profiles, doorstops, and other similar elements should not be screwed through the floor covering into the subfloor.

### 5. MAINTENANCE

---

Damaged planks can easily be replaced. Consider saving a few planks for any potential future repairs. Please refer to our plank replacement manual.

The detailed maintenance instructions can be found in Appendix B of this document.

### 6. WARRANTY INFO AND CONDITIONS

---

The warranty is only valid when the installation guide is followed carefully. More information about the warranty can be found in the 'Warranty document' of our products on the website ([www.berryalloc.com](http://www.berryalloc.com)).

### 7. LEGAL INFORMATION

---

This document presents the general installation instructions, based on the latest available information. For the best results, and to ensure the validity of the guarantee, these instructions should be followed carefully.

This document replaces all previous versions and is valid until further notice. This information is a representation of the technical knowhow at the time that this document was produced/published and may be amended, complemented, or replaced at any time. The version that should be followed is the one valid at the time of installation. Please check for updates at: [www.berryalloc.com](http://www.berryalloc.com)

## APPENDIX A - FLOOR HEATING AND COOLING

BerryAlloc vinyl planks and tiles can be installed with floor heating and/or cooling. However, some important remarks have to be considered to protect your vinyl planks and tiles, and to obtain the best results with your heating system. Both water-based and electric systems are compatible with vinyl planks and tiles, as a part of the subfloor construction.

For the installation of BerryAlloc vinyl planks and tiles on a subfloor with floor heating, the general installation instructions still apply. In addition to the general instructions, we advise the following steps regarding floor heating.

### 1. Preparation

#### 1.1 Maximum capacity

Regarding electric heating systems, the capacity of the heating elements should not exceed 60 W/m<sup>2</sup>. Multiply the m<sup>2</sup> of the surface by 60 to find out what the maximum allowed effect is for the heating elements. For example : 26 m<sup>2</sup> x 60 W/m<sup>2</sup> = 1.560 W => Choose a heating system with a max. capacity of 1.500 W.

#### 1.2 Thermal floor resistance

The maximum permitted surface temperature on the BerryAlloc flooring is 27 °C (80 °F). For water-based heating systems, this means that the heating system's supplier must calculate what the maximum incoming and outgoing water temperatures should be, to make sure that the surface temperature stays below 27 °C (80 °F). Additionally, we recommend using an IR-sensor for constant measurement of the surface temperature. Be aware that loose rugs and mats may function as heat accumulators. Ideally, there should be a gap of at least 3 cm between low-profile furniture and the floor.

When only one section of the floor has floor heating, but your vinyl planks and tiles continue in areas without floor heating, these areas always have to be separated by expansion profiles. The heated and non-heated areas will expand differently due to difference in surface temperature.

#### 1.3 Underlays and moisture barrier

You always need to install a moisture barrier (ageing-resistant polyethylene foil) to prevent any condensation damage to your vinyl planks or tiles. This moisture barrier can be integrated in an underlay, or it can be laid separately. We recommend using an underlay with low insulating properties. Underlays can be used if they have a thickness of maximum 1.5 mm and a compressive strength of more than 400kPa. The Dreamtec+ and Basetec vinyl planks underlays are both good options. Don't use an underlay underneath products with an integrated pad. For these products a separate moisture barrier is necessary.

#### 1.4 Water-based systems

To obtain a homogeneous heat distribution across the entire floor, the distance between the heating elements must not be greater than 30 cm. The depth of the elements is determined by the fitter of the floor heating (> 4cm).

#### 1.5 Thermal resistance

The thermal resistance of a floor used in combination with underfloor heating should not be higher than 0.15 m<sup>2</sup>K/W. Otherwise, the heat will not be able to transfer to the surface of the floor.

#### 1.6 Combination of heating & cooling

Systems that combine both floor heating and cooling need special attention. If the temperature of the cooling water drops below the so-called 'dew point', it will cause condensation, which in turn can lead to mould growth. To protect the quality of your vinyl floor, and to ensure that your warranty remains valid, make sure that :

- the water temperature never goes below 18 °C or 64 °F
- you limit the temperature difference between the floor and the surroundings to 5 °C or 41°F
- your cooling system is equipped with an automatic anti-condensation control system that adjusts the temperature of the ingoing water

Always ask your supplier of the heating/cooling system if it is compatible with vinyl planks and tiles flooring and if they are able to meet all the necessary requirements prior to installation!

## 1.7 Subfloor preparation

The subfloor must be sufficiently dry across its complete thickness when installing the floor covering. This should be maximum 1.8% according to the Calcium Carbide method for cement-bound floors and maximum 0.3% for anhydrite-bound screed. For newly spread screed, follow the guidelines of your installer for the drying and start-up period. A heating protocol should be presented and can be requested from the installer. Properly ventilate the room to evacuate the cleared moisture. Make sure your subfloor is dried out before continuing the installation of the BerryAlloc vinyl floor.

## 2. During installation

### 2.1 Climate conditions

The temperature for laying BerryAlloc vinyl planks must be minimum 18°C and maximum 25°C. If the room temperature is not 18°C, the floor heating has to be switched on at 50% until the room temperature reaches 18°C. Once the room temperature is 18°C, you can turn off the heating completely. The vinyl planks and tiles must be acclimatised for at least 48 hours before installation.

### 2.2 Installing

Install a moisture barrier according to the instructions above.

Install your vinyl planks and tiles (free floating with expansion gaps) according to the installation instructions in the manual or on the box. The latest version can always be found on [www.berryalloc.com](http://www.berryalloc.com).

## 3. After the installation

When the installation is complete, or if the heating system has been turned off for more than 6 months, please consider the following:

- The first week: set the heating system at a low temperature, 18 - 22 °C (64-72 °F).
- The following week: the temperature can be increased gradually.



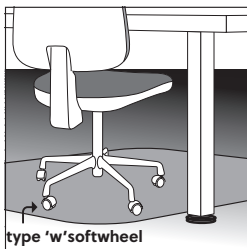
## APPENDIX B - MAINTENANCE

### 1. PROTECTION



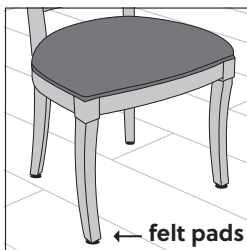
#### DOORMATS

To keep your floor in good condition, it is important to place non-rubber backed doormats at all entrances. Doing so prevents dirt or grit on your floor. These abrasive particles could damage the floor, causing scratches. Do not use rubber-backed mats, as long-lasting contact with rubber can cause permanent discolouration. Never place doormats on a wet floor.



#### SOFT WHEELS

Furniture legs, fitness appliances, etc. should be fitted with soft, non-rubber casters, to avoid permanent damage to your floor. Use a suitable desk mat under rolling office chairs.



#### FELT PADS

You should use felt pads or protective feet for items that contain rubber, such as chair legs, furniture legs, fitness appliances, etc. Use white felt pads, coloured felt might cause stains.

### 2. CLEANING

#### INITIAL CLEANING

First, remove all dirt and dust from the flooring with a brush or vacuum cleaner. Then clean with water and a pH neutral appropriate cleaning agent, at least twice and until the water stays clean. We strongly recommend using the BerryAlloc Vinyl Planks cleaner. Any other cleaning product may contain agents that damage resilient floor surfaces. The coating of the top-layer renders a specific treatment after installation unnecessary.



#### REGULAR CLEANING INSTRUCTIONS

Vacuum or wet mop. When required, use a solution of clean water and a mild, pH-neutral detergent (BerryAlloc Vinyl Planks Cleaner). Do not flood the floor or leave a puddle of water on the floor. Rinse thoroughly and soak up residual water.

*NB: if water is not removed carefully and is able to soak in for some time, it is possible that darker designs show some white discolouration. These spots will disappear within 24h. The floor can feel more slippery when it becomes wet. Spots, marks and spillages should be wiped up as soon as possible. Never use wax or varnish coating. Do not clean the floor with steam products (ex. steam mop).*

## BERRYALLOC MAINTENANCE PRODUCTS

### Cleaner

A special active cleaner for use on new floors immediately after installation and for the routine cleaning of floors factory-cured with a polyurethane finish as well as vinyl treated with PU Protect. Excellent dirt-binding properties, even in the case of fatty deposits. Causes no damage to the floor surface, does not cause greying (development of grey filming) and leaves no residues on the floor.

### PU Protect

Matte polish for the initial protection of newly-laid/thoroughly cleaned floors and subsequent routine cleaning. When dry, it forms an anti-slip matte finish. Ideal for domestic use.

## GENERAL MAINTENANCE PRODUCTS

- Must be PH neutral
  - If acidic: it may react with the floor and cause discoloration or odour nuisance
  - If basic: it may cause discoloration
- No bleach or chlorinated compounds: it may cause discoloration
- No acetone: it may affect the protective layers
- Alcohol-based cleaners: ok to be used if compliant with the above guidelines

## STAIN REMOVAL

1. Clean with a wet floor cloth and use a solution of BerryAlloc cleaning agent in water.
2. Do not leave any puddles of water on the floor (only moisten the floor).
3. Let the product work in for minimum 10 and maximum 15 minutes.
4. Clean with a brush in two different directions.
5. Finally clean with a wrung wet rag until the water is clean again.

Tip: when you are dealing with a particular difficult stain, graffiti wipes might offer a solution. First, let the stain dry out. Then, use the wipes to clean the surface. After the stain is removed, rinse the floor with water to avoid leaving a greasy residue on the surface. Be careful not to leave any puddles of water on the floor.